

Gymnasium Project

New Construction to the Gene Bennett Sports Complex



ABOUT SAINT PAUL'S SCHOOL

Saint Paul's School is a Catholic high school for boys that has been teaching the Gospel of Jesus Christ students in a Lasallian Christ-centered environment of caring discipline, while fostering high academic standards and encouraging community involvement for over 100 years.

The Tradition of a Lasallian Education



The tradition of a Lasallian Education is rooted in the five Core Principles:

- Faith in the Presence of God
- Concern for the Poor and Social Justice
- Quality Education
- Inclusive Community
- Respect for all Persons

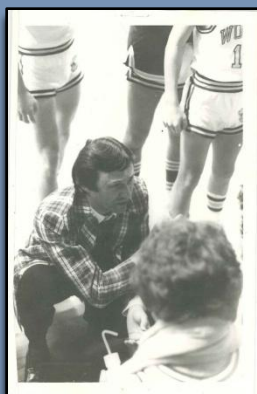
These principles are fostered in every Lasallian institution worldwide and will certainly make any young man from Saint Paul's School feel at home in any of the other Lasallian schools globally. The Christian Brothers are assisted by more than 73,000 lay colleagues, and teach over 900,000 students in 80 countries.

ABOUT THE GENE BENNETT SPORTS COMPLEX



Gene Bennett

Gene Bennett, the quintessential high school coach, spent forty-eight years at Saint Paul's School, teaching, coaching, and serving as athletic director. He arrived on campus immediately after graduating from Tulane, and stayed for the rest of his life. Although Gene is primarily known for his work with basketball on campus, he was also instrumental in starting both the baseball and golf programs, which both have brought home state championships. To name a sports complex in Gene's name is certainly fitting, but Gene was so much more to Saint Paul's, a kind and generous man who mentored students and faculty alike. Someone once asked Gene how many basketball games he had won while coaching. His reply was, "I have no idea, but I can tell you about all the ones I lost." Because of his work in coaching, Gene was honored with membership to the Louisiana High School Hall of Fame. Gene continually strived to make things better, a true Lasallian; he left Saint Paul's school a much better place because of his time here.



Gene had a theory of institutions. He often stated that an institution was all about the people that composed it, and even though people came and went, they left a part of themselves with the institution and a part of the institution stayed with them for the rest of the journey. Gene's diligence, generosity, integrity, and strength of character certainly remain a part of Saint Paul's.

LHSAA Hall of
Fame Coach

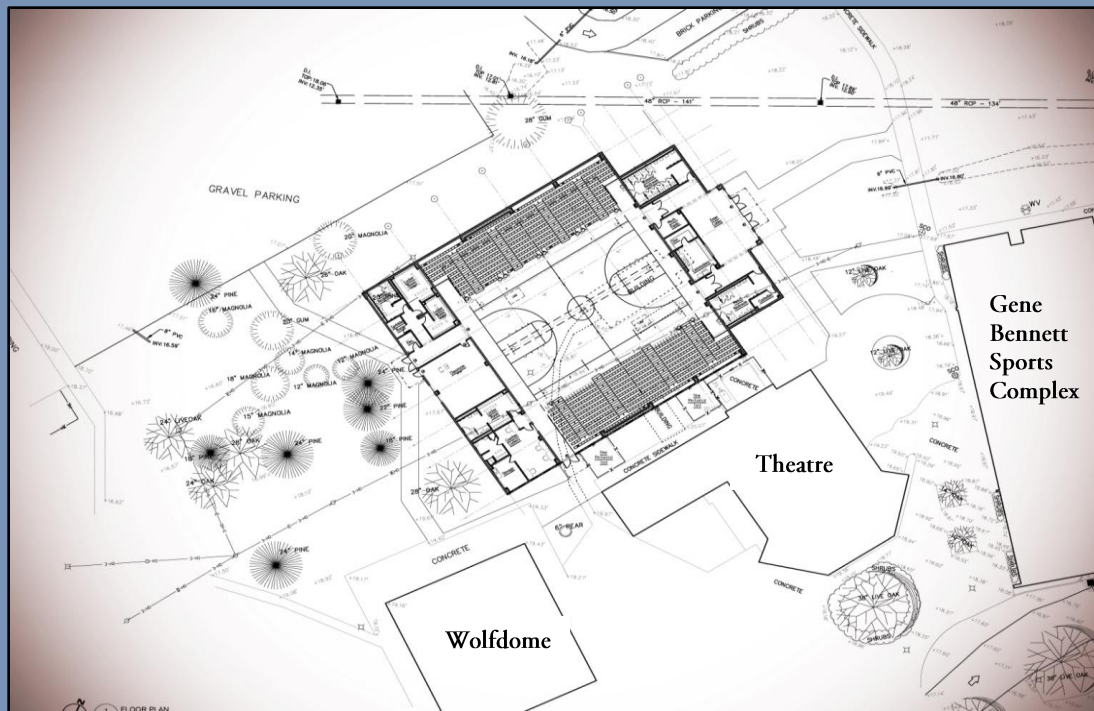


New Gymnasium

Saint Paul's has successfully educated young men on the northshore for over 100 years. The benefit of that success is the need to create a safe, educational environment for the increased student population. The current gym seats 850, at a President's assembly we have students seated on the floor. The present space also houses weight, wrestling, locker, and training rooms, as well as coaches' office. These facilities are used daily for health and physical education instruction, and for changing, practice, and training, but they are no longer adequate for our student population.



Health and Physical Education classes need more room, and expanded seating is necessary. According to LHSAA regulations, a 5A school must have a gym with the capacity to seat 1000 to be able to host a playoff game. In addition to meeting this seating requirement, new construction will enlarge and improve facilities used daily for Physical Education, as well as provide practice, training, and working space for the hundreds of students involved in the seventeen sports housed on our campus.



The new gymnasium's location will make it a central part of Saint Paul's busy campus; located directly behind the Alumni Theatre and between the existing gym and main classroom building. Covered sidewalks will provide safe and dry access from one location to the next as the students travel through their day. Parking in the Jefferson Avenue Oval and in the rear of the Briggs Center will make the building easily accessible to students, parents and visitors to the campus.



New Gymnasium

Philanthropic Opportunities

Invest in the Future of Athletics at Saint Paul's School



NEW GYMNASIUM FAST FACTS

Size

One story with a total of 19,500 square feet.

Completion

Fall 2015

Design and Build Team

Fauntleroy Latham Weldon Barré Architects
Covington, LA

Donahue Favret Construction Company
Mandeville, LA

Features

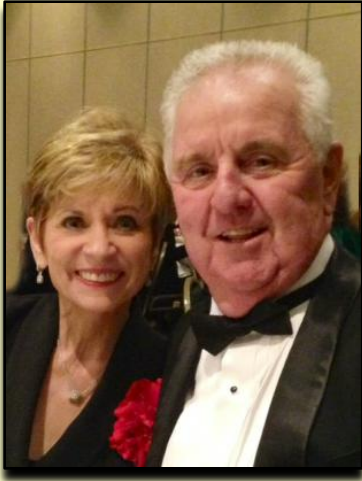
- ✓ Expanded space to hold 1100 students
- ✓ Expanded locker rooms for athletes
- ✓ Multi Media classroom including Wi-Fi access

- ✓ Climate controlled
- ✓ Provide space for the present gymnasium to be refurbished



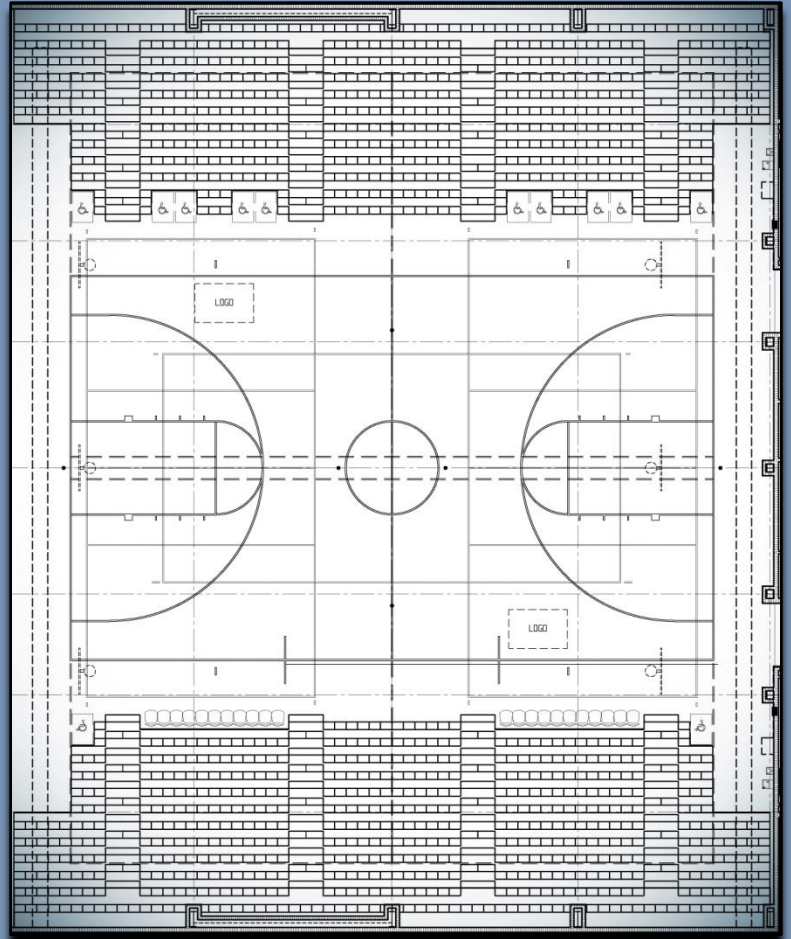
Naming Opportunities

Building Name available for \$2,000,000



“Saint Paul’s has been a very special place for the Boudreaux Family for almost 60 years. It has also been an integral part of our lives individually. I urge everyone that has had an involvement with the school as an alumnus, parent or friend to give back to the future of Saint Paul’s.

- George Boudreaux '65 with his wife Debbie

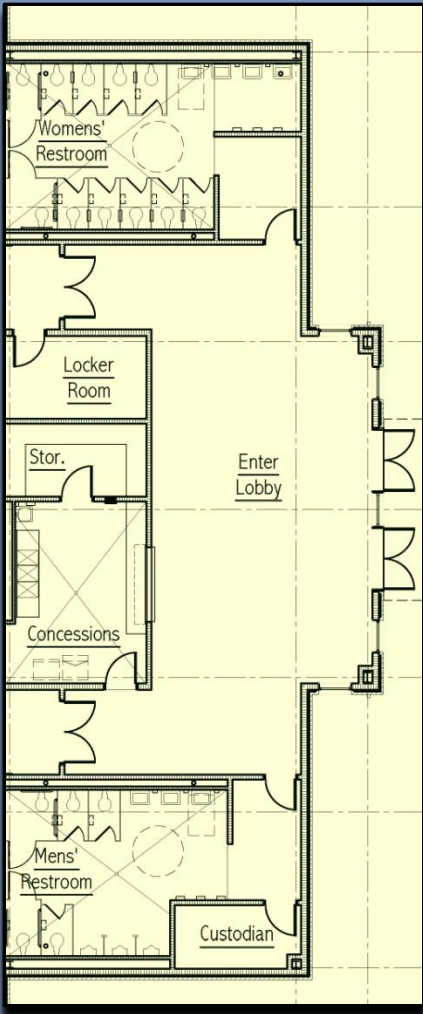


Interior Court Area

Space	Donation	Availability
Main Court	\$250,000	Yes
Left Bleachers	\$ 50,000	Yes
Right Bleachers	\$ 50,000	Yes
Scoreboard	\$ 20,000	Yes
Sound System	\$ 15,000	Yes



Interior Lobby

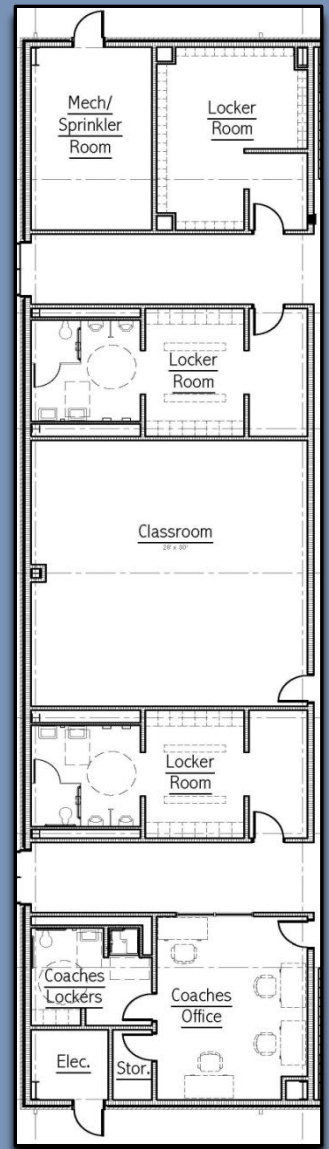
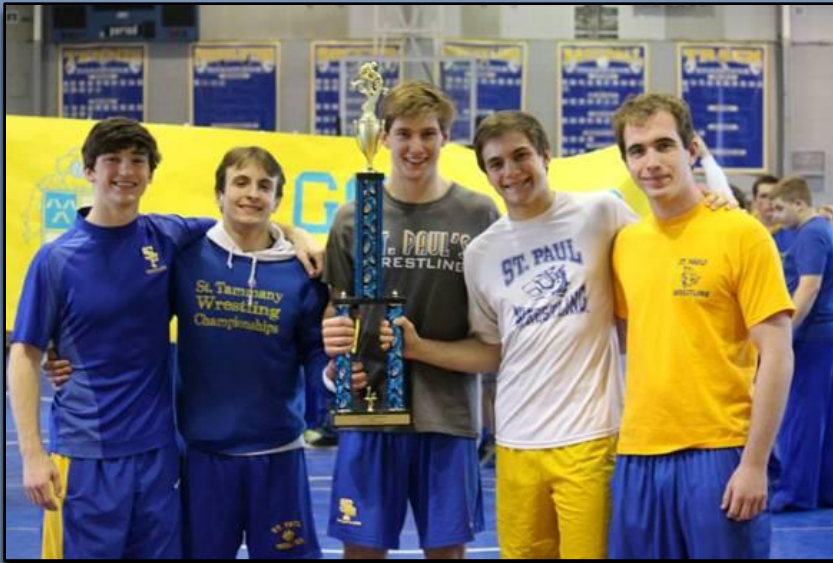


Space	Donation	Availability
Lobby	\$ 20,000	Sold
Concession Area	\$ 15,000	Sold
Locker Room	\$ 10,000	Yes

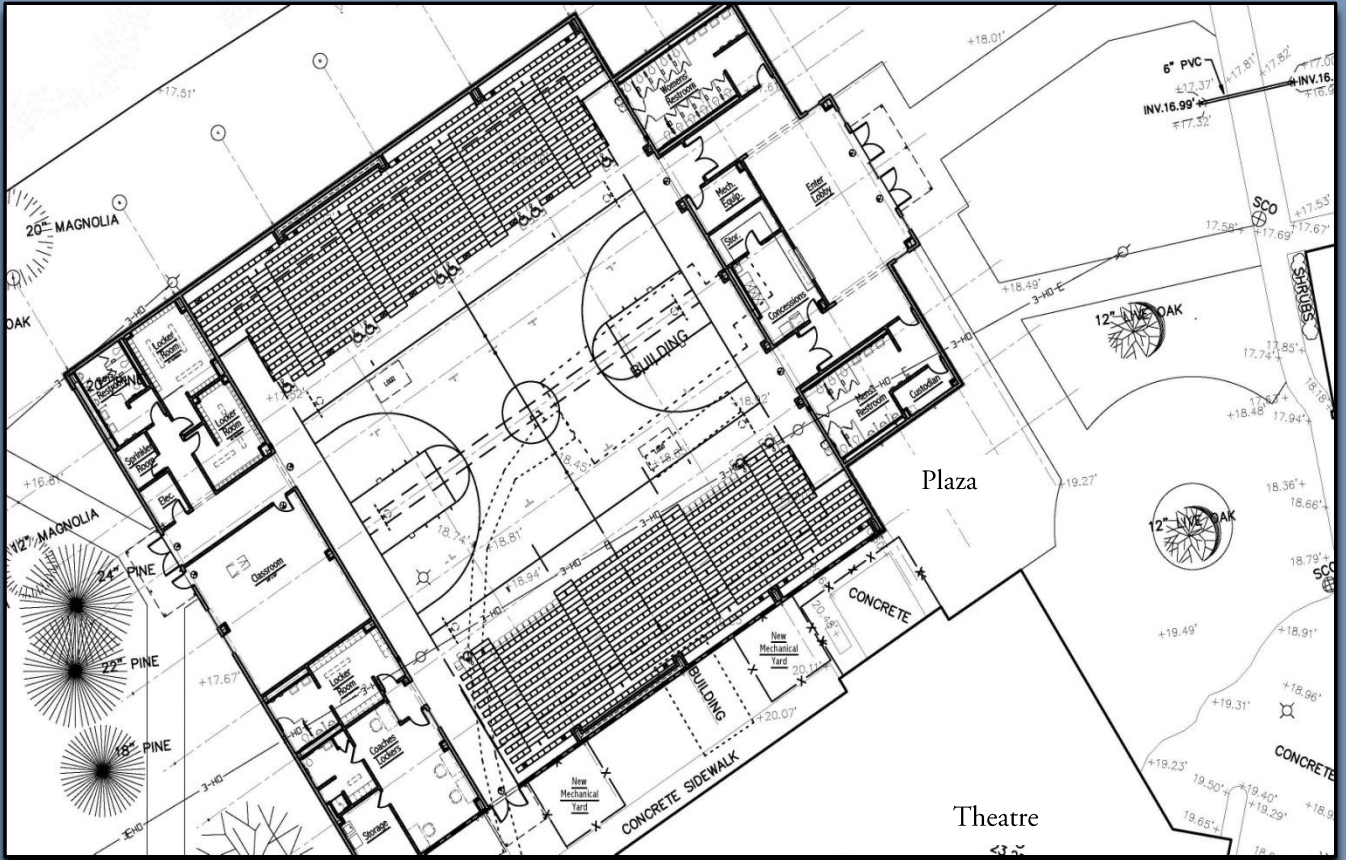


Interior Coaches / Student Areas

Space	Donation	Availability
Multi Media Classroom	\$ 25,000	Yes
Coaches Office	\$ 20,000	Yes
Locker Room	\$ 10,000	Yes
Locker Room	\$ 10,000	Yes
Locker Room	\$ 10,000	Yes



Exterior Spaces



Space	Donation	Availability
Courtyard / Plaza	\$ 30,000	Yes



Honoring the Past and Building for the Future

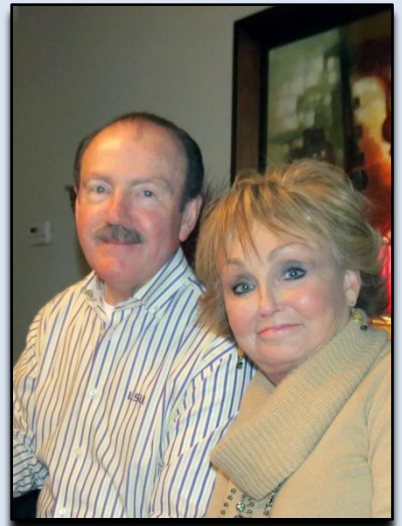
Keeping the present gym and constructing a new facility shows Saint Paul's commitment to the students and the desire to be "good stewards" of the properties in our possession. The use of both the new and old gyms will provide the young men entrusted to our care the environment they require and deserve. The project will continue the school's tradition of honoring the past and building for the future.

FAITH; FAMILY; SUPERIOR EDUCATION; PERSONAL and FAMILY DEVELOPMENT

My wife Carolyn and I consider these the cornerstones of life. We have entrusted Saint Paul's and the Christian Brothers' community with our children and grandchildren for many years.

RESULTS...."Life Altering" in the most positive ways imaginable !

Please join Carolyn and me in financially supporting Saint Paul's, as achieving such extraordinary outcomes, does require significant investment. Tour the campus and see for yourself all the exciting activities underway !



- David and Carolyn Briggs

LEARN MORE ABOUT THESE OPPORTUNITIES

For more information on the new gymnasium naming opportunities, please contact: **Br. Ray Bulliard, FSC**, President of Saint Paul's School 985-892-3200 ext 1001 broray@stpauls.com

www.stpauls.com/support/new-gymnasium

